

# NEWS FROM KANAPAHA

~Come find your place in God's family.~

Kanapaha Presbyterian Church

Gainesville, Florida



**2/3/13**

**LORD'S SUPPER**  
 JEREMIAH 1:4-10  
 PSALM 71:1-6  
 LUKE 4:21-30\*

**2/10/13**

**TRANSFIGURATION**  
 EXODUS 34:29-35  
 PSALM 99  
 LUKE 9:28-36(37-43)\*

**2/13/12**

**ASH WEDNESDAY**  
 ISAIAH 58:1-12  
 PSALM 51:1-17  
 MATTHEW 6:1-6, 16-21

**2/17/13**

**1ST SUNDAY IN LENT**  
 DEUTERONOMY 26:1-11  
 PSALM 91:1-2, 9-16  
 LUKE 4:1-13\*

**2/24/13**

**2ND SUNDAY IN LENT**  
 GENESIS 15:1-12, 17-18  
 PSALM 27  
 LUKE 13:31-35\*

**SERMON TEXT\***

## From The Pastor . . .

The 1975 comedy movie, *Monty Python and the Holy Grail*, while searching for the Grail, King Arthur encounters the ominous Black Knight. The black Knight refuses to let the king pass, and a battle ensues. The king cuts off the knight's left arm and then says, "Now stand aside worthy adversary." The knight responds, "'Tis but a scratch . . . I've had worse. Come on, you pansy." Still wielding his sword in his right hand, the knight attacks the king—until he loses that arm as well. King Arthur proclaims victory, but the armless knight will not give up. He continues to fight by kicking and head butting Arthur. The king replies, "Look . . . you've got no arms left." And the Black Knight retorts, "It's just a flesh wound. Chicken. Chicken." Arthur then dismembers both of the knight's legs and says, "All right we'll call it a draw." But the Black Knight is still unwilling to concede and yells to Arthur as he rides off, "I see. Running away then. Come back here and take what's coming to you. I'll bite your legs off."

We are so much like the Black Knight—unwilling to admit that our body has been amputated. But when we are not in church and when we are not offering God, our best, our first fruits of time, talent and financial re-  
 (Continued . . .)

## In This Issue . . .

<i>From the Pastor *Worship *In This Issue</i>	<b>1</b>
<i>From the Pastor (Cont'd) *Congregational Meeting</i>	<b>2</b>
<i>Heart, Home &amp; History Tour</i>	<b>3</b>
<i>Lent Bible Study *Adult Sunday School</i>	<b>4</b>
<i>Sunday Lock-up *Thank You Elders</i>	<b>5</b>
<i>Session *Birthdays/Anniversaries</i>	<b>6</b>
<i>Session (Cont'd) *Choir Notes &amp; Praise Band</i>	<b>9</b>
<i>Building &amp; Grounds *Congregation Care</i>	<b>10</b>
<i>In Our Prayers *KPC Book Group *Three Cheers</i>	<b>11</b>
<i>Missions—Food4Kids</i>	<b>12</b>
<i>Treasurer's Report</i>	<b>13</b>
<i>Worship Volunteers *Imposition of Ashes</i>	<b>14</b>
<i>Mr. Movie</i>	<b>15</b>
<i>Notes &amp; Calendar</i>	<b>16</b>

## *From the Pastor (Cont'd) . . .*

sources, when we do make the effort to participate in the activities of the church such as potlucks, Bible studies, Book studies, our body of Christ is incomplete. When you are missing, your absence is felt and the church suffers. Someone once said, "Every time you are absent from church, it is a vote to close the church doors." This is especially true in the small church!

At its Planning Retreat held last Friday and Saturday, your session identified three ministry goals for 2013:

1. Keep, nurture and grow BOTH services.
2. Increase and promote the VISIBILITY of the church in the community
3. Increase the involvement of the CONGREGATION

In order to achieve these goals, the entire church needs to pull together as the Body of Christ. The church is only as strong as its attendance because our strength comes from pulling together, and absence makes us weaker. And when we are not here, the body is amputated. It is as if we have cut off a leg. Maybe we can still function, *but we are not at full strength*. We hobble more than we run.

You have elected a top notch session. But the session is only a small part of the church. Everyone's full participation is needed if the church is to be the church God calls us to be. It all comes down to priorities. There are many churches in Gainesville, that will "do" church for you. Don't settle for Christianity "Light." True discipleship that allows us to experience the depth of abundant life demands giving of self, full engagement, and dare I say it - sacrifice. Claim your baptismal heritage, roll up your sleeves and seek to grow into the person God made you to be. **"Together we are the body of Christ and individually members of it."** (1 Cor 12:27).

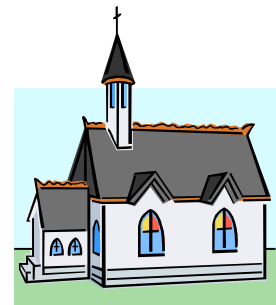
Shalom,  
Pastor Dawn

*Jesus said*  
***"Take my yoke upon you  
and learn from me. For I  
am gentle and humble in  
heart and you will find  
rest for your souls. For  
my yoke is easy and my  
burden is light."***  
*(Matthew 11:29-30)*

## **Annual Congregation Meeting Sunday, February 10th**

The **Annual Meeting of the Congregation** will take place during the Sunday School hour on Sunday, February 10th. It will be preceded by a potluck brunch beginning at 9:50 am. Please bring a dish to share. The meeting will begin at 10:10 am. The purpose of the meeting will be to:

- Present the 2013 Budget.
- Approve the Terms of Call for the Pastor.
- Provide written 2012 committee reports.
- Elect the 2013 Nominating Committee



## *Heart, Home & History . . .*

### HEART, HOME & HISTORY TOUR

Take a tour and delve into the daily lives of 1850s Gainesville settlers; told on site at the Historic Haile Homestead, Kanapaha Church Cemetery and 1886 Kanapaha Church

**Saturday, February 16<sup>th</sup>, 2013**

**1 pm - 4 pm**

**\$15 donation per person, under 12 free**

**Advanced Tickets - \$12 - on sale at the Homestead, Church, or online at [www.hailehomestead.org](http://www.hailehomestead.org). For more information, call: (352) 378-9080**

The tour begins at 1 pm at the Historic Haile Homestead, 8500 SW Archer Road (SR 24), Gainesville, Florida with a brief tour of the 1856 plantation home of the Thomas Evans Haile family and an overview of the South Carolinian settlers who relocated to the area and established their beloved church. The tour will then continue at the Kanapaha Church Cemetery at the dead end of SW 63<sup>rd</sup> Blvd., north off Archer Rd. and conclude at

Kanapaha Presbyterian Church, 6221 S.W. 75<sup>th</sup> Terrace.

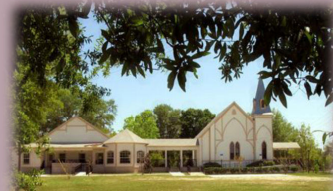
The story, told by a costumed narrator, includes several dramatic vignettes. Meet Serena Haile, who will read excerpts from her diary and Rev. Wm. J. McCormick, first pastor of the church. Learn about the Kelleys who worked at the Homestead first as enslaved laborers, then as freedmen.

Music, refreshments, and art exhibit included!

**Guests are encouraged to use their own vehicles to travel to each site. (Van transportation provided for a limited number for those who desire on a first come/first serve basis. Preference given to seniors.) Travel time of 15 minutes allowed between sites.**

**Tour is wheel-chair accessible.**

**Rain Date: March 16, 2013, 1 pm**





## Adult Bible Study



Seasons OF THE Spirit™

### ***Adult Sunday School . . .***

Are you looking for some thoughtful and interactive engagement of mind and spirit? The Adult Sunday School class will begin using a new curriculum: *Seasons of the Spirit* on Sunday, February 17th. Sessions in this study invite adults to deepen their spirituality and explore their faith through activities and articles that encourage a rich engagement with all four of the weekly lectionary readings. Because this study follows the three year lectionary, the Biblical passages studied in adult Sunday School will be the same texts on which Pastor Dawn preaches. The study includes art images, contemporary writings, and consideration of current issues to offer meaningful ways to link faith and life.

The Adult Sunday School class meets in the Memorial Hall on Sunday mornings from 9:55 to 10:40 am. Please come and join us. All are welcome and we always have a chair for one more!

### ***Thursday Morning Lenten Bible Study . . .***

Thursday morning Bible Study 2/14, 2/21, 2/28, 3/7 & 3/14, & 3/21  
Classes meet from 10:30 am to 12:00 pm

In this six-week adult study, “*An Acceptable Fast: An Adult Lenten Study*,” Old Testament scholar and teacher Patricia Tull begins each session by locating the biblical verses in their original context and then exploring a key Lenten theme related to the text. Themes include: voice gratitude, take the long view, choose well, accept responsibility, welcome the future and trust God in times of conflict. Each session ends with a meditation on how the text speaks to our modern situation . This study will begin on Thursday, February 14th. Please join us.

**If you are interested in a weekday evening Lenten Study, please let Pastor Dawn know.**





## *Thank you to our Elder rotating off the Session.*

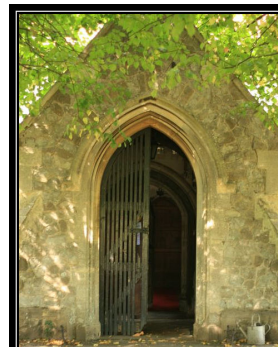
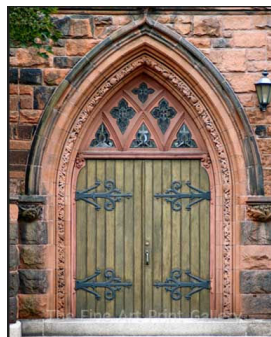
Mike Jamerson has completed his terms of service on the session. He will be recognized for his faithful service at the conclusion of the Annual Congregational meeting on February 10th at 10:10 am. We appreciate his service to God and the church and the many hours of hard work he has devoted in sharing his time and talents.

Our newest elder, Jere Steele will be introduced to sanctuary worship service on February 3rd and presented to the congregation at the Annual Congregational Meeting, February 10, 2013. He has been examined and was ordained and installed on Sunday, January 27th at the Church & Café worship service. Joanna Long was installed January 27th.



## *KPC Sunday Lock-Up . . .*

<u>DATE</u>	<u>NAME</u>	<u>PHONE</u>
1/20	Tom Jordan	214-8069
1/27	Paula Bedford	(352) 239-3625
2/3	Jere Steele	495-3840
2/10	Kevin Conti	222-9859
2/17	Evelyn & Don	371-2917
2/24	Joan Stout	377-0967
3/3	Paul Bennett	377-5114
3/10	Tom Jordan	214-8069
3/17	Paula Bedford	(352) 239-3625
3/24	Jere Steele	495-3840
3/31	Kevin Conti	222-9859
4/7	Evelyn & Don	371-2917
4/14	Joan Stout	377-0967
4/21	Paul Bennett	377-5114





## February Birthdays

- 01 Lisa Dixon
- 02 Heather Jamerson
- 02 James Claus
- 03 Janet Phipps
- 04 Tom Jordan
- 04 Jenifer Woolley
- 05 Doris Hoppes
- 05 Lucinda Rosenberg
- 07 Bill Amann
- 22 Keri Jamerson
- 22 Sally Walker
- 24 Pat Stump
- 24 Sam Claus
- 26 Shirley Underwood



## Anniversaries

- 2/17 **Teddy & Moe  
Rancourt**

## Session

*by Clerk of Session, Art Watson*

### SPECIAL SESSION MEETING - November 5, 2012

The Special Session Meeting was opened with prayer at 6:02 pm by Moderator, Rev. Dawn Conti.

**Moderator:** Rev. Dawn Conti

**Elders Present** were Paula Bedford, (Acting Clerk of Session), Tom Jordan, and Joan Stout. **Elders Excused** were Mike Jamerson and Art Watson.

Treasurer, Evelyn Perry also attended.

### A QUORUM WAS PRESENT

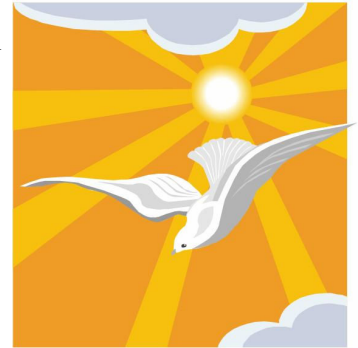
Memorial Service for Rev. Herb Parsons was postponed.

**MSP** to postpone direct mailing discussion until January, 2013

**MSP** to investigate Bumper Stickers and/or Banner campaign by the congregation

**MSP** to continue Good News Walk-about on November 27, 2012 and distribute Advent Brochure.

The meeting was closed in prayer by Rev. Conti at 6:30 pm.




---

### STATED SESSION MEETING - TUESDAY, NOVEMBER 20, 2012

The Stated Session Meeting was opened with prayer at 6:30 PM by Moderator Rev. Dawn Conti in McCormick Hall.

**MODERATOR:** Rev. Dawn Conti

**Elders Present** were Mike Jamerson, Tom Jordan and Art Watson (Clerk of Session)

**Elders Excused** were Joan Stout and Paula Bedford.

### A QUORUM WAS PRESENT.

It was **MSP** to approve the evening's agenda following the addition of "Discussion regarding Advent Events planning".

## *Session (Cont'd)*

*by Clerk of Session, Art Watson*

### STATED SESSION MEETING - TUESDAY, NOVEMBER 20, 2012 (CONTINUED):

#### **Consent Agenda**

The consent agenda containing the following items was **MSP**.

**Newsletter Deadline** will be November 26, 2012

The next **Stated Meeting** will be held on January 8, 2013 with no stated meeting in Dec.

Approved the use of Memorial Hall by the Claus family's Eagle Scouts on, 12/2, 2012 3-4pm

#### **OLD BUSINESS**

##### **Clerk's Report**

**MSP** to approve the minutes of Stated Session Meeting held 10/09/12, and the Special Session Meetings held 10/23/12, and 10/29/12

The Lord's Supper was served weekly at the Church & Café Service except on 11/11/12 due to Pastor's vacation leave and on 11/4/12 at 11 AM Service

Correspondence to Session

It was **MSP** to approve the October 2012 Treasurer's Report.

The Pastor's Activity Report for the period October 9 through November 20, 2012 was presented by Rev. Dawn and approved (**MSP**) by the Session.

The Session **MSP** approval to pursue a "Historical Cooperative Tour of KPC Sanctuary, Cemetery & Haile Homestead" in partnership with Historic Haile Homestead, Inc. The event is tentatively scheduled for the latter half of February 2013.

#### **COMMITTEE REPORTS**

##### **Administration**

Following a review of four local cleaning service quotes, it was **MSP** to narrow the selection to the two lowest bidders, **Southern Point Cleaning Service** and **Angulo Cleaning** and to authorize Lynn King to check references and make the final selection.

It was **MSP** to place the \$100 received from the sale of 4 (surplus) chairs into the General fund.

Pastor Dawn will be out on Sunday, December 30, 2012 and the Session has **MSP** to hold a single 11 AM service on that date. In lieu of a supply pastor, the Session will ask the congregation for (3 minute) testimonials to share. The approaching New Year provides a perfect theme for asking "What has God done for me last year?" and "What will I do for God in the coming year?"

##### **Buildings & Grounds**

Saturday, December 1, 2012 was scheduled for "Hanging of the Greens and Church Workday". The Session has agreed that hanging the greens will be the primary objective.

Materials to finish sealing the decking outside McCormick Hall have been purchased and arrangements are being made to complete the work.

***Session (Cont'd)****by Clerk of Session, Art Watson***STATED SESSION MEETING - TUESDAY, NOVEMBER 20, 2012 (CONTINUED)*****Building & Grounds (Continued)***

The Session has been asked to consider changing pest control services and it was **MSP** to table this matter until written quotes, scope of services and warranty information can be obtained from the current provider and potential competitors.

***Christian Education***

Rev. Conti mentioned the upcoming four week Advent Study beginning Thursday, November 29, 2012 from 10:30-Noon.

***Congregational Care/Fellowship***

Congregational and Session feedback from the recent Stewardship Dinner was discussed and found generally favorable. The slide presentation on the 2013 Asking Budget has been sent to the congregation but will be sent again as part of another email from the Pastor.

***Missions***

Daisy Scout Troop is meeting at KPC on Sat, 2 times/month.

Dawn and Paula are planning a Bake Sale Auction and will ask if members for donated goods.

Thanksgiving Basket Update – 7 baskets were delivered.

***Nominating Committee***

An informational meeting has been called on Sunday, December 2, 2012 during the normal Adult Sunday School time for the Nominating Committee and potential new Session Elders.

***Worship***

Advent Session activities and responsibilities were discussed.

The meeting was closed in prayer by Rev. Dawn Conti at 8:30 pm.

**SPECIAL SESSION MEETING—November 27, 2012**

The Special Session Meeting was opened with prayer at 6:42 pm by Moderator, Rev. Dawn Conti.

**Moderator:** Rev. Dawn Conti

**Elders Present** were Paula Bedford, (Acting Clerk of Session), Tom Jordan, and Joan Stout. **Elder Excused** was Art Watson. Mike Jamerson attended by speaker phone.

**A QUORUM WAS PRESENT**

Attempt to finalize question of Supply Pastor for December 30, 2012





**Session (Cont'd)***by Clerk of Session, Art Watson***SPECIAL SESSION MEETING—November 27, 2012 (Continued)**

MSP to try to find a Supply Pastor to preach on 12/30. If unable to, proceed with proposed plan to have members of the congregation give testimony.

MSP Monies raised by Bake Sale which were proposed to be used for Mission trips be repurposed for General Fund Use.

The meeting was closed in prayer by Rev. Conti at 7:20 pm.



“LOVE  
the LORD  
your God  
with all your  
heart...soul  
...mind and...  
strength.”

Mark 12:30

**CALLED CONGREGATIONAL MEETING—SUNDAY, DECEMBER 16, 2012**

The Called Congregational Meeting was opened with prayer at 12:16 pm by Moderator, Rev. Conti, in the sanctuary.

**A QUORUM WAS PRESENT.**

MSP (motion from the nominating committee) to elect as Elders to the Session Joanna Long, Mary Moffett, and Jere Steele (class of 2015)

The meeting was closed in prayer by Moderator, Rev. Conti, at 12:21 pm.

**Choir Notes . . .**

The choir is in need of volunteers! We will resume practice on Sunday, February 3, at 1 pm in the sanctuary as we prepare special music for Palm Sunday and Easter Sunday. We invite all who wish to practice with us to join us for a lunch of soup, salad, and bread in the Fellowship Hall following the 11 am service as we work together to lift up our voices in joyful praise for the gift of God's only son, Jesus Christ, our Savior.

Beginning Sunday, February 17, Children's Choir will meet at 9:55 am in the Sanctuary to begin preparation for Palm Sunday and Easter Sunday Services to be directed by Joanna Long Claus and Joan Stout. We invite all Sunday School age children to participate.

**Praise Band . . .**

Praise Band Practice is Thursday Nights at 7:30 pm in Memorial Hall. If you'd like to join us, please contact Travis Clements at: [travisrandallclements@gmail.com](mailto:travisrandallclements@gmail.com)

## ***Building & Grounds***

***By Co-Moderators, Tom Jordan & Jere Steele***

Kanapaha Church is losing the free lawn services we have enjoyed for many years. Our options are to pay for a lawn service (estimated to cost \$3,000/year); purchase lawn and grounds maintenance equipment for use by members of the congregation (estimated one time cost of \$3,000); or find volunteers to provide lawn service.

The Session has approved \$3,000 for the purchase of lawn and grounds maintenance equipment. Jere Steele will donate the materials for a shed to house and secure the equipment. Tom Jordan and Jere will construct the shed (other volunteers welcome).

We are seeking contributions to offset this purchase. Please let us know if you can help in this way.

## ***Congregational Care . . .***

***By Moderator, Paula Bedford***

### ***Newest Addition . . .***

Congratulations to the Kim/Prasad family! Carol, Ashish and Jack welcomed Baby Maya to their family on January 23rd at 4:19 am. She weighs 6 lbs 12 ozs. We welcome her with love and joy to our KPC Family!



### ***Familiar Faces . . .***

Thomas and Christina Sheppard have moved back to Alachua County and are residing on Earle Street in the city of Waldo. They have been living in Jacksonville for the past few years. Christina is the daughter of Helen Hyatt.



### ***Recuperating . . .***

Hazel Kemper is recuperating at North Florida Rehab and Specialty Care (6700 NW 10th Pl Gainesville, FL 32605) Room 131. She will be recuperating here through the month of February. She welcomes visitors, and loves to play cards. She is also allowed to leave the premises (check out with the Nurses Station.) for a lunch or visit outside the facilities.

### ***Flowers . . .***

If you have signed up to dedicate flowers during the year (on the flower-log in the narthex), Paula Bedford would like you to know that she is willing to make flower arrangements if you will let her know in advance, for the cost of the flowers. Paula's Contact information is: [queengator@gmail.com](mailto:queengator@gmail.com) Her phone: 1 (352)239-3625



### ***Thank you . . .***

Nancy Lee and Bill Christian wish to thank all who have generously donated sweaters, jackets, shoes and school supplies. They, through the Eastern Star have distributed them to needy families and schools.

### ***Congregational Care Meeting . . .***

There will be a Congregational Care Meeting on Sunday, February 17th immediately following the 11:00 am worship service.

## *Our Prayers . . .*

**Please keep the following members and friends in your prayers:**

Jamie Cheves, Hazel Kemper, Holly McGarity Durrenberger, Kay & Stan McCandless, Dona Moody, Mitch Nodell, Barbara & Francis Rea, Will Thompson, Al & Shirley Underwood



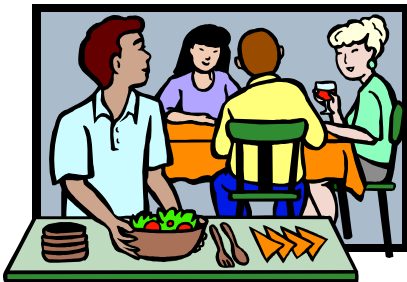
## *KPC Book Group . . .*

Kanapaha Church Book Group will meet on Monday, February 4th at 1:30 pm. The book to be discussed is *The Alchemist* by Paulo Coelho. Diane Jones will host in Memorial Hall. Please join us.



## *Three Cheers . . .*

- To **Richard Barratt** and **Jote Thompson** for working on and repairing The lock and hinges of Kitchen Door.
- Congratulations to **Nancy Lee Christian** who received the honor of a Grand Appointment from the Masons Order of the Eastern Star to represent Florida in Delaware.
- To **Bill Clark** for painting McCormick Hall doors. The beautiful vibrant red looks great!
- To **Scout Troop 1085, Elizabeth, Mikayla, Taylor, Jordan, Wendy, Sierra, and Miralys** with their leader, **Chad Hubbard**, donated food for our Food4Kids Backpack Program.
- To **Jere Steele** who donated a lawn trimmer to KPC for cleaning and edging KPC's lawn.
- To **Tom Jordan** and **Jere Steele** who, with Pastor Dawn, scraped, and painted the old metal chairs.
- To **JoAnna Thomas** who came over to train Scout Troop 1085, and the next day came to train Daisy Scout Troop how to pack the food for the Back Pack Program



## *POTLUCK BRUNCH*

Please join us at our next monthly **potluck brunch**, at 9:50 am on Sunday, February 10th

Please remember to bring the amount you normally feed your family, plus a bit extra to share.

The **Annual Congregation Meeting** will follow at 10:10 am. in Memorial Hall.

## *Missions . . .*

*by Pastor Dawn*

In January 2009, Kanapaha Church partnered with Idylwild Elementary in establishing a Food4Kids program providing backpacks of food each weekend for 8 children identified by school personnel as living in homes that were food insecure. Since that time, the need for food assistance has grown tremendously. The number of children now being served has increased to 36 at a cost of over \$6,000. a year. Due to the efforts of Evelyn Perry, federal grant money has been secured to offset these costs. Even so, the cost in financial and human resources has outgrown our ability to provide for the 36 currently being served and the other children at Idylwild who are on a waiting list to get into the program.

Thankfully, a solution has been found that will allow for all of the children to receive assistance. **Beginning the first week of February, Catholic Charities will be the new provider to partner with Idylwild Elementary and administer the Food4Kids Program. This will be the last week Kanapaha Church will be involved in this ministry. Thursday, January 31st, Kanapaha Church made its final delivery of food.**

This has been a ministry made possible by many hearts and hands over the years. A big thank you to **JoAnna Anchors** and **Lynn King** who have coordinated the program since it began. Lynn has spent countless hours, much of it on her own time, buying, storing, delivering the food while also keeping up with the paperwork associated with the program. JoAnna has perfected the packing and delivery system and taught many others who have become involved in the program. She is the primary liaison to Idylwild and represented the church in the most loving and friendly way. Thank you to **Evelyn Perry** who has put in many hours resourcing grant funds, shopping for food, handling the accounting side of this ministry, and arranging for Catholic Charities to take over. Thank you to the **Severance/Foster family** and **Diane Jones** who have stored food and helped in other ways. Thank you to those who packed and delivered including **Linda Goshorn** and **Bill Russell, Connie and Dave Sloane, Jean (and Clyde) Glennon,** and **Tom Jordan.** And thank you to the many unnamed who contributed financially or who I have unintentionally forgotten to mention. A special thanks to the two scout troops that meet at the church and their leaders who were willing to be part of this ministry. I'll be in touch to discuss possible substitute service projects for the future.

Let us give thanks for the opportunity we have had in helping to be God's hands and feet in feeding otherwise hungry children and pray for the folks at Catholic Charities as they continue this important ministry serving many more children in the future.





***Treasurer's Report, December 2012******by Evelyn Perry***

	<u>Dec 12</u>	<u>Jan-Dec 12</u>
Income		
Grants		589
Interest Income	3	83
Memorials		1,175
Offering	13,911	135,601
Other Income	125	2,160
Youth & Adult Missions	<u>          </u>	<u>3,413</u>
Total Income	14,039	143,021
Expense		
Administration	910	12,199
Buildings & Grounds	1,088	14,046
Christian Education		1,196
Congregational Care		506
Fellowship	20	181
Missions	992	11,752
Mortgage	743	14,252
New Member Development	25	399
Personnel	7,820	100,857
Tee shirts		353
Worship	132	442
Youth Missions & Camps	<u>          </u>	<u>2,002</u>
Total Expense	<u>11,731</u>	<u>158,184</u>
Net Income	<u>2,309</u>	<u>-15,163</u>

The first column is for the month of December; the second column is January 2012 through December 2012.

**December Income:**

- **Offering \$13,910.78:** \$13,171.29 was received for General Fund. Designated funds were: \$40 Flowers, \$176 Joy Offering, \$50 Food4Kids, \$473.49 undesignated missions.

- **Other Income \$125:** Use of Memorial Hall.

**December Expense:**

- **Administration \$910.21:** \$30 Flowers, \$519.31 Insurance, \$96.45 Office Supplies, \$36 Postage, \$150 Session Retreat \$99.43 Telephone & Internet.

- **Buildings & Grounds \$1,088.18:** \$303.34 Cleaning Service, \$259.55 Electricity, \$91.75 Garbage Collection, \$115.71 water at cemetery, \$317.83 water at church.

- **Fellowship \$20:** \$19.97 Coffee

- **Missions \$992.19:** \$226.00 Joy Offering, \$671.80 Food4Kids, \$94.39 Interfaith Hospitality Network.

- **Mortgage \$742.68:** \$272.68 Interest, \$470.00 Principal. After the December payment, the principal balance was \$64,972.37.

- **New Member Development \$24.98:** Web address fee.

- **Personnel \$7,820.25:** \$1,072.61 Admin Asst., \$190 Child Care, \$776.75 Choir Director/Pianist, \$750 C&C Musician, \$4,930.89 Pastor Salary Package, \$100 Pulpit-fill.

- **Worship \$132.16:** \$48.50 bulletins & candles, \$56.41 Church & Caf , \$27.25 Pew envelopes.

**2012:**

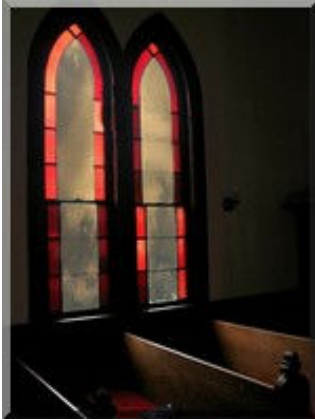
- We ended the year with a balance of \$10,974.10 in the Checking Account and \$40,355.22 in the Savings Account. More detail will be in the Annual Reports. Please attend the meeting.

- Statements of Giving for 2012 have been handed out or mailed. If you have questions or did not receive yours, let me know.

- For additional information about any of the accounts or if you have any questions about the finances of the church, please call Evelyn Perry at 371-2917 or e-mail ([evperry@aol.com](mailto:evperry@aol.com)).

- **Thank you very much for your continued support of Kanapaha PC.**

## *Worship Volunteers . . .*



### **FEBRUARY**

**Liturgist:** Joanna Long    **Ushers/Greeters:** Judy Dappier & Shirley Miller

### **Children's Message**

<b><u>Date</u></b>	<b><u>C&amp;C</u></b>	<b><u>Sanctuary</u></b>
2/3/13	Amy Rosenberg	Shirley Miller
2/10/13	Kim Childers	Warren Dixon
2/17/13	Dawn Conti	Dawn Conti
2/24/13	Kate Conti	Kate Conti

## *Ash Wednesday . . . February 13, 2013*

Ash Wednesday marks the beginning of the season of Lent as we gather for worship on this day to hear God's word, celebrate the Lord's Supper and participate in the service of Imposition of the Ashes. During the Ash Wednesday service, worshippers are invited to come forward to have a cross drawn (with the ashes from the palms of the previous year's Palm Sunday processional) on their foreheads. Why the ashes? Marking the faithful with ashes is an ancient custom signifying grief and mourning. In the early church (first 500 years after Christ's death), Christians who had committed grave faults were required to do penance. On Ash Wednesday, the bishop blessed the uncomfortable hair shirts they were to wear during the 40 days of Lent, and sprinkled them with ashes. Then while the congregation recited psalms, they were turned out of the sanctuary because of their sins, just as Adam and Eve had been turned out of the Garden of Eden because of their disobedience. They did not enter the church again until Maundy Thursday after they had performed some act(s) of penance and received absolution. As the years went on the truth of the scripture that says, "All have sinned and fallen short of the glory of God." (Romans 3:23) began to sink in and all received ashes on the Wednesday before the first Sunday in Lent as a way of reminding them of our ultimate dependence of God and our need to repent of the things that separate us from God and others.



**Ash Wednesday Service, 7 pm on February 13, 2013**  
**Lord's Supper & Imposition of Ashes**

## ***Mr. Movie***

*by Kevin Conti*

***Mr. Movie advises you to delete all correspondence from imaginary girlfriends...***



***Ruby Sparks (2012)*** is the creation of a young novelist, Calvin, in the midst of a writer's block after a recent break-up with his real-life girlfriend. Calvin's first book was wildly successful, but he is lonely and depressed. He is encouraged by his therapist to write something – anything – to satisfy his publisher and re-energize his life, so he begins typing a story (on his old-school typewriter) about a quirky girl from Ohio with red hair who is “looking for something new.”

***“I want a girl who has no past, She's made up now, But that won't last” –  
“Spooky Girlfriend” by Elvis Costello***

***“If I had my life to live over, I would perhaps have more actual troubles but I'd have fewer imaginary ones.” --Don Herold, American humorist, writer and cartoonist***

The girl, Ruby Sparks, appears the next day. She is played by Zoe Kazan, also the screenwriter, and the granddaughter of the great director Elia Kazan (*On the Waterfront; Gentleman's Agreement*). Calvin, played by Paul Dano (*Little Miss Sunshine; There Will Be Blood*), and Ruby begin their relationship innocently enough, but then Calvin discovers that whatever he types on the page will change Ruby's behavior. Of course, Calvin gets carried away with this power, and the film turns from a mild PG-13 romantic comedy, complete with an aging hippy Mom played by Annette Bening, into an R-rated melodrama, and then back again. The two leads are in a real relationship off-screen, so there is genuine chemistry. With nods to *Catcher in the Rye*, Calvin proclaims that falling in love, like writing, is an act of magic, with the words coming through you, not from you. An interesting perspective.

***“Imaginary lovers never disagree, They always care, They're always there when you need, Satisfaction guaranteed...” - “Imaginary Lover” by The Atlanta Rhythm Section***

***“Some people have a way with words.....some people.....not have way.” - Steve Martin***

***The Words (2012)*** is another multi-dimensional “dramedy” worth a second look. It stars Bradley Cooper (*Limitless*) as Rory, a struggling writer who stumbles upon a handwritten manuscript that he begins to type on his computer with the intention of re-igniting his creative fire. When his wife, Zoe Saldana (*Avatar*), reads his draft, it reignites her passion, prompting Rory to plagiarize every word and forward to his publisher. The book makes him an instant success, but he soon learns, per the tagline, “there's more than one way to take a life.” Co-stars Dennis Quaid, Jeremy Irons, & Olivia Wilde

***With persuasive words she led him astray; she seduced him with her smooth talk. All at once he followed her like an ox going to the slaughter... - Proverbs 7:21-22***

***When the sentence for a crime is not quickly carried out, people's hearts are filled with schemes to do wrong. - Ecclesiastes 8:11***

***“Many of us crucify ourselves between two thieves - regret for the past and fear of the future.” –  
Fulton Oursler***

## FEBRUARY NOTES

- 2/2 Stated Presbytery Meeting, 9 am, Ocala
- 2/3 4th Sunday after Epiphany with Celebration of Lord's Supper
- 2/4 Book Club, 1:30 in Memorial Hall
- 2/5 Special Session Meeting, 7 pm
- 2/7 Thursday Morning Bible Study, 10:30-noon
- 2/9 Daisy Scouts, 10-noon
- 2/10 Transfiguration of the Lord, Potluck Brunch 9:50, Annual Congregational Meeting 10:10 am  
Girl Scout Troup 1085, 5-7:30 pm
- 2/12 Stated Session Meeting, 7 pm
- 2/13 Ash Wednesday, Imposition of Ashes & Lord's Supper, 7 pm
- 2/14 Thursday Morning Lent Bible Study, 10:30-noon
- 2/16 Heart, Home & History Tour with Haile Homestead, 1-4:00
- 2/17 1st Sunday in Lent, Children's Choir, 9:55 in Sanctuary, Congregation Care Meeting, 12:15
- 2/20 Newsletter Deadline,
- 2/21 Thursday Morning Lent Bible Study, 10:30-noon
- 2/24 2nd Sunday in Lent, GP, Rev. Joan Wells, Children's Choir 9:55 am
- 2/28 Thursday Morning Lent Bible Study, 10:30-noon



Sun	Mon	Tue	Wed	Thu	Fri	Sat
					1	2 Presbytery Mtg. 9 am Jax
3 8:30 Chrch & Cafe 9:50 Sunday Schl. 11:00 Worship	4 1:30 Book Club	5	6 7:30 AA	7 10:30 Bible Stdy Food4Kids 7:30 Praise Band	8 6 pm Valentines	9 Daisy Girl Scts 10-noon
10 Transfiguration 8:30 Chrch & Cafe 9:50 Sunday Schl. 11:00 Worship Scouts 5-7:30	11	12	13 Ash Weds. 7:00 Disposition of Ashes 7:30 AA	14 Food4Kids 10:30 Lent Stdy 7:30 Praise Band	15	16 1-4:00 pm Heart, Home, Haile Tour
17 1st Sund Lent 8:30 Chrch & Cafe 9:50 Sunday School 11:00 Worship 12:15 CCC	18	19	20 7:30 AA	21 10:30 Lent Stdy Food4Kids 7:30 Praise Band	22	23 Daisy Girl Scts 10-noon
24 2nd Sunday Lent 8:30 Chrch & Cafe 9:50 Sunday Schl. 11:00 Worship Guest Preacher	25	26 7 pm Stated Ses- ion Meeting	27 7:30 AA	28 10:30 Lent Stdy Food4Kids 7:30 Praise Band		





## Kanapaha Presbyterian Church

6221 SW 75<sup>th</sup> Terrace  
Gainesville, Florida 32608  
(352) 378-9080

### **The Session**

Rev. Dawn Conti, Moderator  
Joan Stout, Clerk of Session

### **Session Members**

#### **Class of 2013**

Paula Bedford

#### **Class of 2014**

Tom Jordan  
Joan Stout

#### **Class of 2015**

Joanna Long  
Jere Steele

Rev. Dawn Conti, Pastor	331-8874
Evelyn Perry, Treasurer	371-2917
Joan Stout, Pianist/Choir Director	377-0967
Travis Clements, Praise Band Leader	(404)927-2294
Lynn King, Administrative Asst.	378-9080

**Church Office Hours: M-Th 9:00 am. -1:00 pm**

### ***KPC Mission Statement:***

***“Glorifying God through  
learning, living, and sharing  
the Good News of Jesus Christ.”***